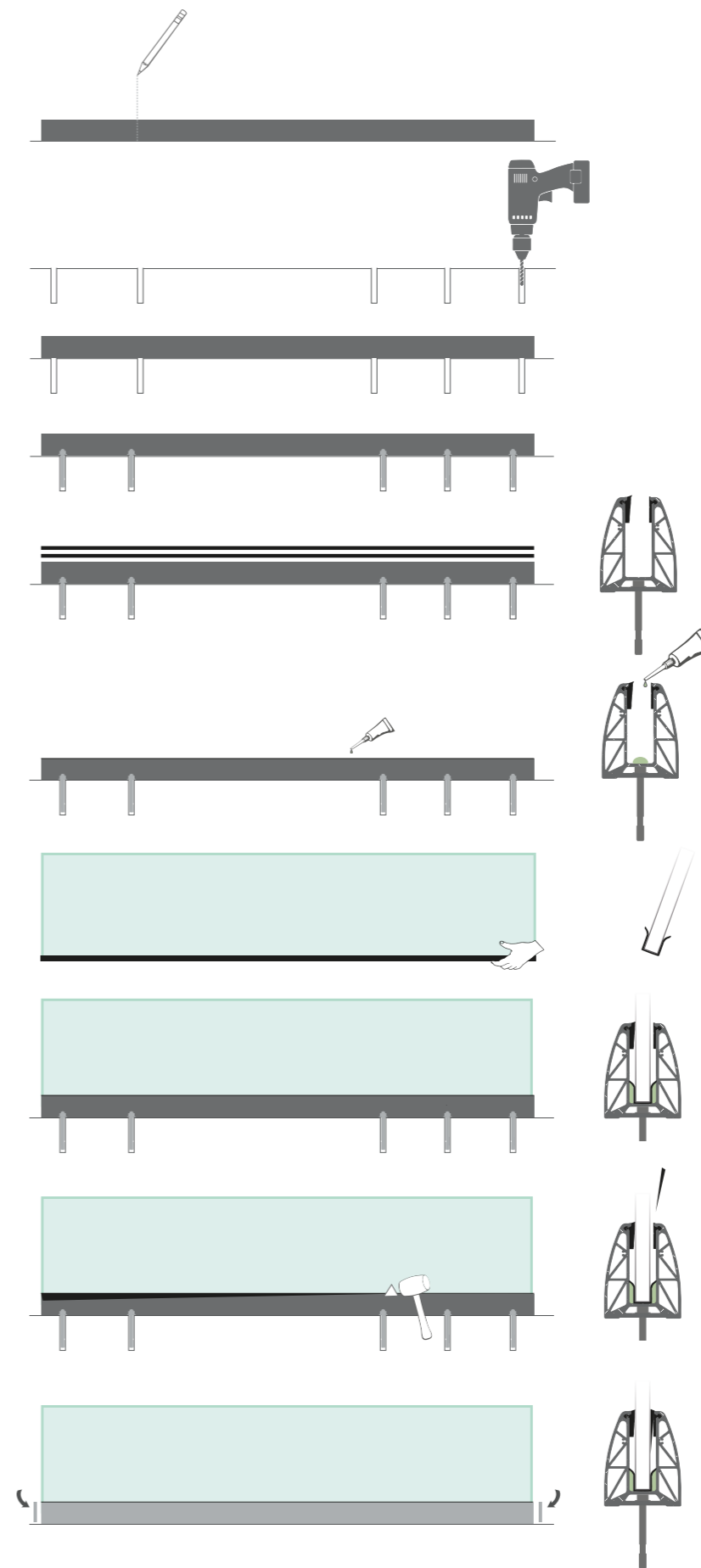


- 1 elastic gaskets on notches
- 2 aluminum mount body
- 3 elastic wedge gasket
- 4 elastic П-shaped gasket
- 5 80HV glue 80HV
- 6 special metal plug (index) M8

oval end taps without notch
in natural anodization, stainless steel 304
and RAL colours



5m, 6m rods



- 1 hole marking using the mount
- 2 opening holes on a straight line, where the railing is to be placed
- 3 positioning of single rod
- 4 immersion and detonation of metallic plugs
- 5 applying elastic gaskets into mount's notches
- 6 applying adhesive at scattered points
- 7 applying П-shaped gasket onto the lower end of the glassboard
- 8 glassboard mounting
- 8 wedging in the wedge gasket so that enough pressure is applied and full immersion using a mallet and wooden wedge. Glassboard alignment.
- 9 Removal of protective film and mounting of end side-taps.